

The Hunt Museum

5,000 years. 2,500 objects. Infinite Stories



Museum | Art | Exhibitions | Gift Shop | Café | Garden | Community

Situated on the beautiful banks of the River Shannon at the heart of Limerick's cultural district, the Hunt Museum is home to the world class collection of Gertrude & John Hunt, passionate antiquarians who had a particular interest in medieval objects. Displayed within the historic Customs House, an exquisite Georgian building, designed by architect Davis Ducart circa 1764, it showcases over 2,500 objects collected by the Hunts, from the Neolithic period to the present day. The collection is for national and international visitors to explore and enjoy.

What will you discover during a visit to The Hunt Museum

Highlights include:

- The Hunt Family History: a family of antique experts and consultants | their amazing collection.
- The Hunt Family & Limerick: the family's special connection to Limerick City and county.
- Important Art: including works by Picasso, Renoir and Jack B. Yeats.
- Sacred Pieces: one of the best collections of medieval religious works of art in Europe.
- Stunning Jewellery Collection: The Mary Queen of Scots Cross and the personal Seal of Charles I of England.
- Ceramics Collection: a diverse range of pieces spanning from the Bronze Age to the 20th century, highlighting both functional and decorative works from various cultures and traditions.
- Sybil Connolly Collection: a internationally recognised fashion designer renowned for her use Irish textiles to create haute couture.
- Passionate Local Experts/Tour Guides Expert Docent Tour Guides: Offering insights, historical context, and personal anecdotes that bring the collection to life.
- Museum Garden: sculpture trail, a vibrant communal space, games in the garden
- Views: Overlooking the River Shannon, Limerick's historic quarter.

The Custom House
Rutland Street
Limerick, V94 EV8A
Co. Limerick

huntmuseum.com
+353 (0)61 312833



Museum Experiences

| Self-Guided

A Self-Guided Tour of the Hunt Collection - Expected visit time 45 minutes.

Explore the Hunt Museum at your own pace with a printed guide (available in six languages) and interactive displays. Discover hidden treasures like Renoir and Gauguin, Celtic weapons, Bronze Age tools, and medieval relics. In the Treasury Room, see a stunning collection of early Christian art, including The Dekadrachma, believed to be one of Judas' 30 silver pieces. Expert Docents are on hand to assist throughout your visit. Interactive displays are located throughout the Museum.

Be sure to explore our current exhibitions and events during your visit!

| Guided Tour

A guided tour by one of our expert docent guides - Expected visit time 1 hour.

Would you like to enjoy an exclusive guided group tour of one of Ireland's most impressive private collections of art and antiquities? Special rates are available for tour groups, travel agents, and coach operators (subject to pre-booking).

| Group Tours

Please contact bookings@huntmuseum.com to make a booking or for further information. Group bookings to be made a week in advance of your visit. Please arrive 10 minutes prior to your tour.

General Admission:

Adult: €12.50
Concessions: €10
Under 16s, Go FREE
with accompanying adults.
Adult Group (6+ Adults): €10pp

We offer free admission
to carers or essential companions,
assisting visitors with additional needs.



Opening Hours:

Tuesday to Saturday, 10am-5pm
Sunday, 11am - 5pm
Monday, Closed

The Custom House
Rutland Street
Limerick, V94 EV8A
Co. Limerick
huntmuseum.com
+353 (0)61 312833



Visitor Information

| Accessibility

The Hunt Museum is committed to improving disability access and inclusion through our Inclusive Museum project, co-designed with autistic individuals and those with visual impairments. Learn more on our website.

| The Hunt Café

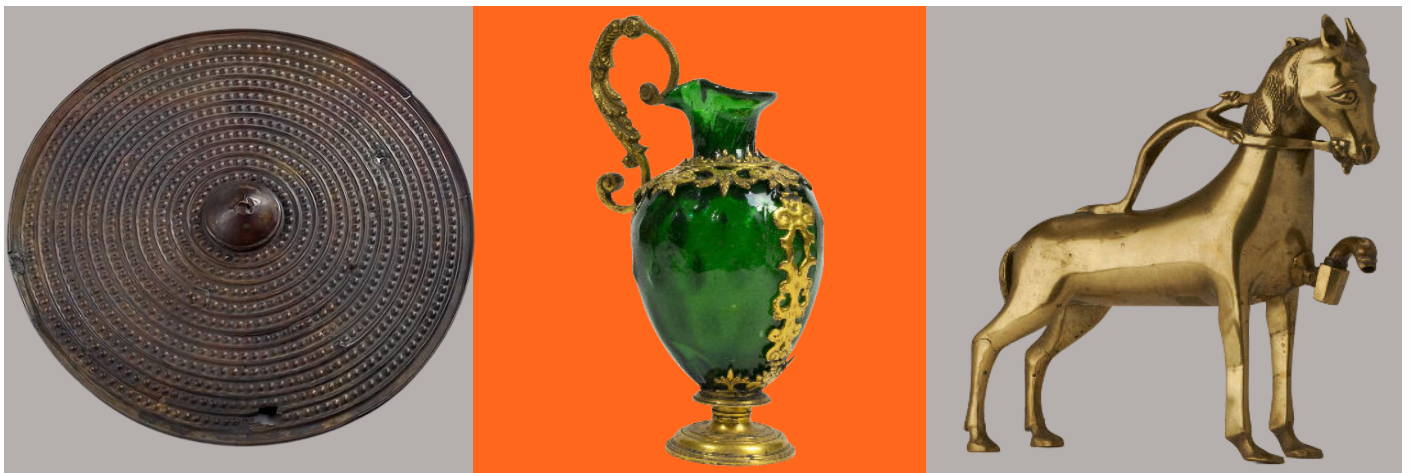
The Hunt Café offers a warm and welcoming space to enjoy delicious locally sourced food with stunning views of the River Shannon. Whether you're stopping by for coffee, lunch, or a sweet treat, it's the perfect spot to relax and refuel.

| Museum in a Garden

The Museum in a Garden is a public urban amenity located by the River Shannon, the garden offers spaces for relaxation, community activities, games, and dining in a fully accessible setting, with a sensory garden for all to enjoy. The garden showcases sculptures created through 3D scanning and printing technologies, bringing artefacts from the museum's collection into the open for public enjoyment. Open to all, the Museum in a Garden offers chess, sculptures, and green spaces, enriching Limerick's cultural landscape.

| Climate Action Plan

The Hunt Museum promotes sustainability through its Climate Action Plan and by partnering with local suppliers in the Gift Shop to support Irish artisans and eco-friendly products.



Getting Here

The Hunt Museum is conveniently located in the heart of Limerick City, just a 15-minute walk from the train station and only 3 minutes from the bus station at Arthur's Quay. Limerick City is very conveniently located a short drive from Shannon Airport and is the Gateway City to the Wild Atlantic Way.

| Parking

Located in the heart of Limerick, there are a number of public parking options available nearby. Here are some details:

- Coach parking: There is coach parking opposite the Potato Market (beside Saint Mary's Cathedral) just a 2 minute walk from the Hunt Museum.
- Public car parks: There are several public parking facilities within walking distance of the museum, including the Potato Market, Georgia Street and the King's Island car park.
- Street parking: On-street parking is available around the museum, with some areas offering pay-and-display options.

| Visitor Accessibility

- Designated disabled parking: Two spaces are available. Please request these when booking.
- Wheelchair accessibility: The museum is fully wheelchair accessible, with lifts providing access to all levels of the building.
- Cyclist facilities: Bike racks are available on-site.
- Visually impaired access: We provide sensory-friendly experiences, including tactile and audio guides, to support visually impaired visitors.
- Autism awareness: The museum is committed to being autism-friendly, offering quiet spaces and visual aids to assist visitors with autism.

| Opening Hours

Monday: Closed

Tuesday – Saturday: 10am – 5pm

Sunday: 11am – 5pm